



23 St. Bedes Gardens
Cambridge, CB1 3UF

Guide price £275,000

23 St. Bedes Gardens

Cambridge, CB1 3UF

- Renovated ground floor maisonette
- No onward chain
- Allocated parking
- Private garden
- EPC - D / 59
- Council tax band - B

A well-positioned ground-floor maisonette with driveway parking & a private garden, adjacent to well tended allotments & enjoying a pleasant cul-de-sac position in CB1, for sale with no chain.

This smart maisonette has been well cared for and is well suited to first time / investment buyers alike. The property has been subject to a renovation which includes updated kitchen, shower room, flooring & electric heating, furthermore the property has around 145 years left on the lease & is available with the benefit of no onward chain.

There is a bright living/dining room which benefits from a dual aspect & offers pleasant views over the allotments nearby. The kitchen has been fitted with a modern range of base & eye-level units & includes various integrated & freestanding appliances. A door leads to the rear garden. There is an inner hallway with a useful storage cupboard. The double bedroom benefits from a built-in sliding wardrobe & overlooks the private rear garden. Completing the accommodation is a refitted shower room, complemented by attractive tiling & a heated towel rail.

Outside the front of the property is a driveway and an open-plan garden. A side access leads to the garden which has been mainly lawned. There is also





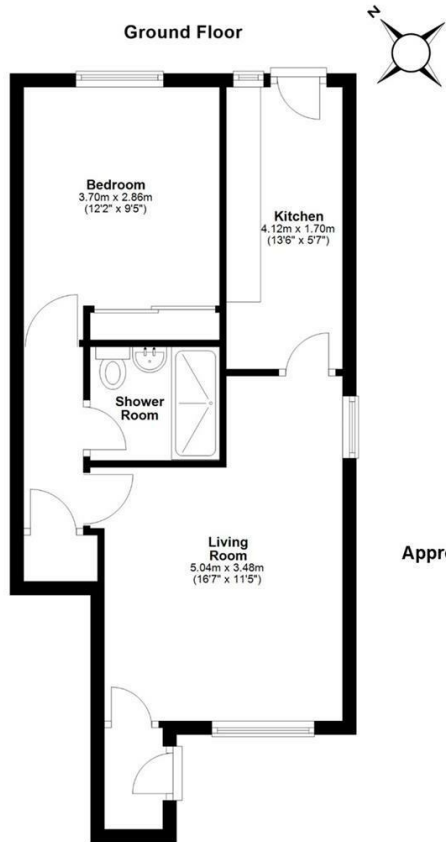
a storage shed at the foot of the garden.

There are 145 years left on the lease with a ground rent of £30 per annum. There is no service charge.

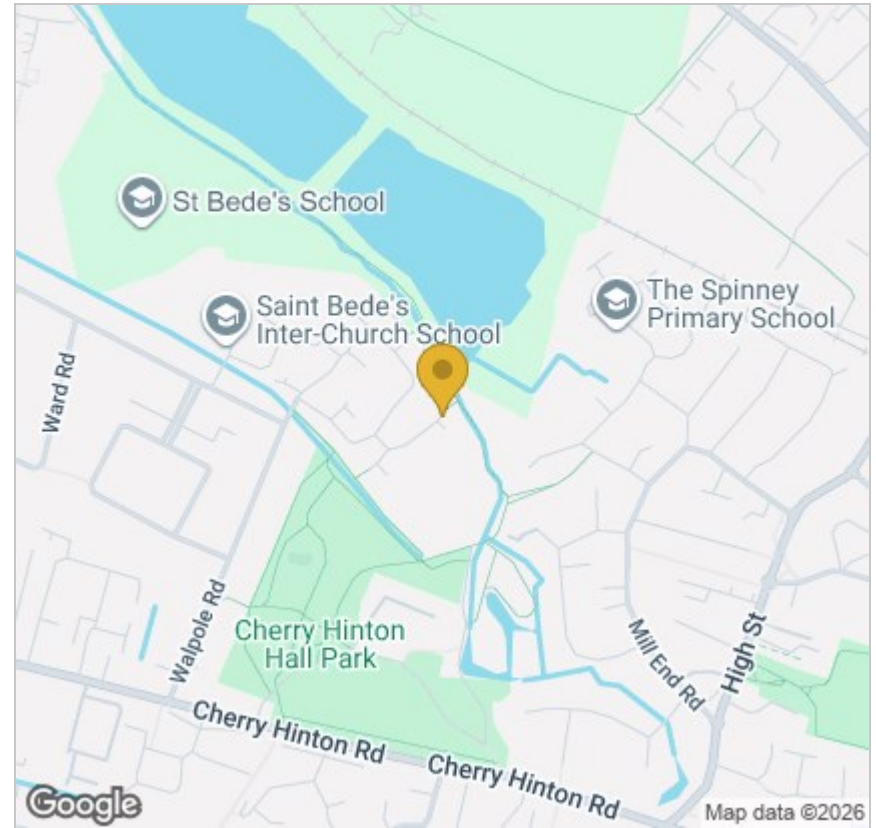
St Bede's Gardens is a small cul-de-sac located off Cherry Hinton Road. It is exceptionally well located for access into Addenbrooke's campus & Arm Headquarters.

There is also excellent access to Cambridge railway station, less than a 10 minute drive or cycle ride away. There are various amenities nearby including a grocery store, petrol station, doctor's surgery, chemist, newsagents and Balzano's deli. newsagents and Balzano's deli. Cherry Hinton Hall Park is only a few minutes' walk and offers a playground, paddling pool & a duck pond.

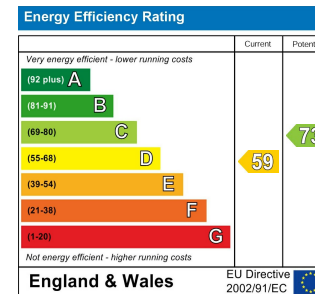




Approx. gross internal floor area
42 Sqm (450 sqft)



Energy Efficiency Graph



Tenure: Leasehold
Council tax band: B

These particulars, whilst believed to be accurate, are set out as a general outline only for guidance and do not constitute any part of an offer or contract. Intending purchasers should not rely on them as statements of representation of fact, but must satisfy themselves by inspection or otherwise as to their accuracy. No person in this firm's employment has the authority to make or give any representation or warranty in respect of the property.